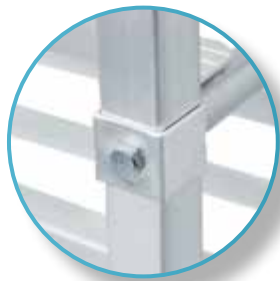
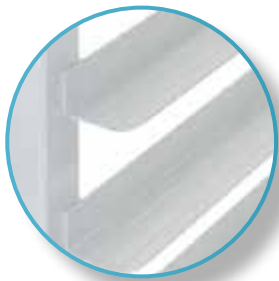


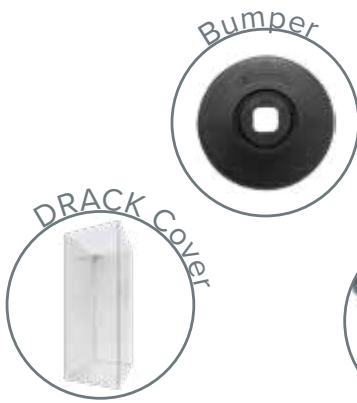
ALUMINIUM BUN PAN RACK DRACK-2018-ALUWBE

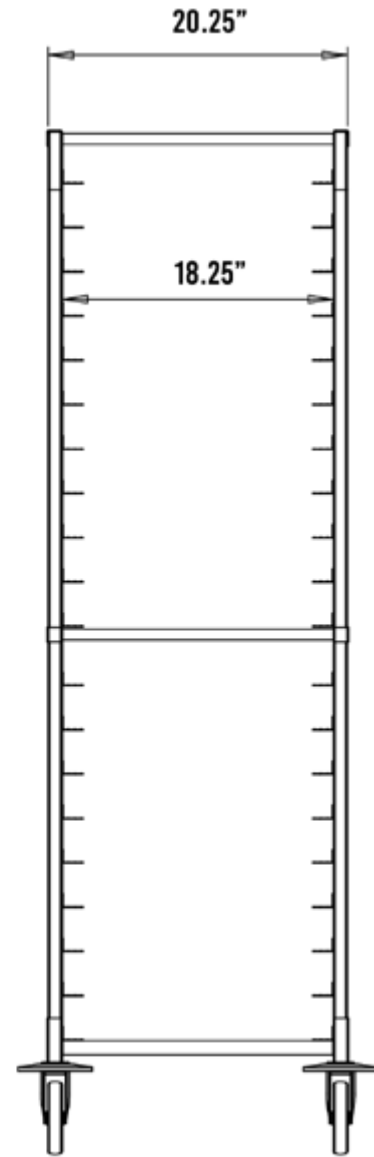
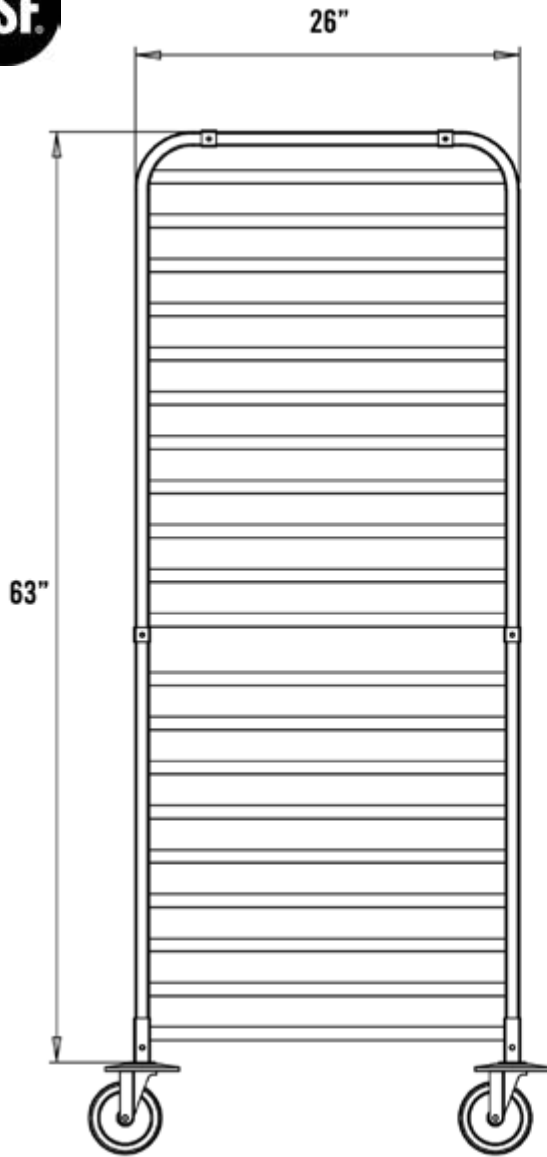
FEATURES

- ✓ Dimensions: 20¼" x 26" x 69"
- ✓ Made of new aluminium
- ✓ 20 shelves for 18" x 26" bun pans
- ✓ 4 heavy duty 5" swivel caster (2 with brakes)
- ✓ Easy to assemble
- ✓ With reinforced bars in the middle



ACCESSORIES





ASSEMBLY/SUPPORT



We're on social media!

MORE PRODUCTS

