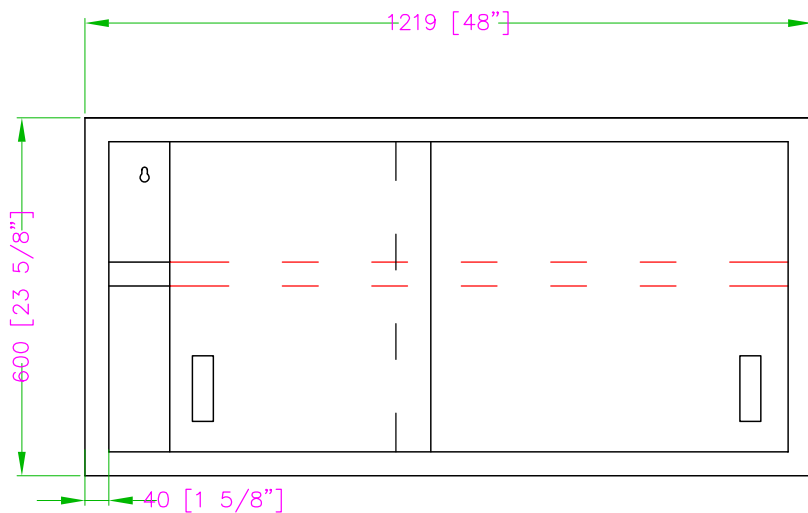
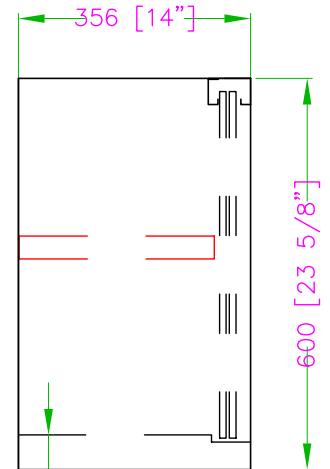


60" x 14" STAINLESS WALL CABINET TWCA-1460-SS

FEATURES



- ✓ Made with high quality 18 gauge, 430 stainless steel
- ✓ Adjustable stainless steel middle shelf included
- ✓ Dimensions: 60" x 14" x 24" ✓ Max load: 77 lbs
- ✓ Lock included standard ✓ Delivered assembled



[2 1/8"]



ASSEMBLY/SUPPORT



We're on social media!

1.800.567.3620 | WWW.THORINOX.COM

MORE PRODUCTS

