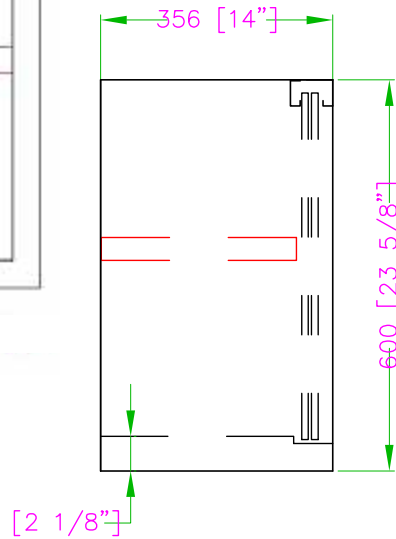
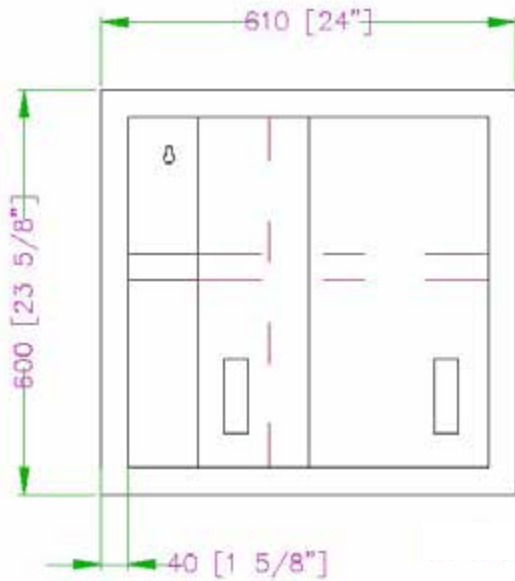


# 24" x 14" STAINLESS WALL CABINET TWCA-1424-SS

## FEATURES



- ✓ Made with high quality 18 gauge, 430 stainless steel
- ✓ Adjustable stainless steel middle shelf included
- ✓ Dimensions: 24" x 14" x 24"      ✓ Max load: 77 lbs
- ✓ Lock included standard              ✓ Delivered assembled



### ASSEMBLY/SUPPORT



We're on social media!

1.800.567.3620 | WWW.THORINOX.COM

### MORE PRODUCTS

