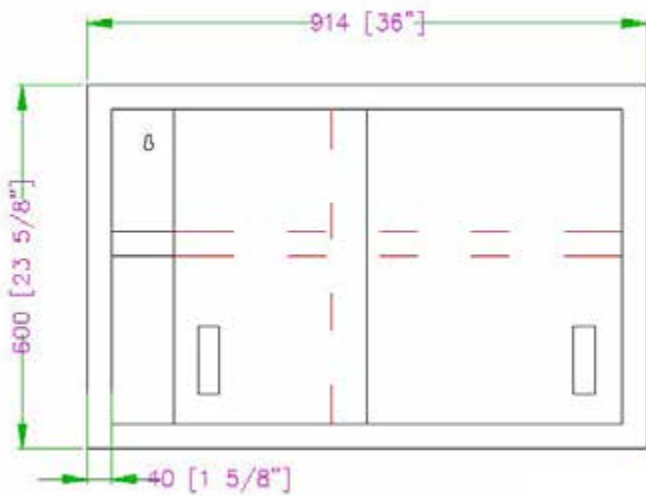
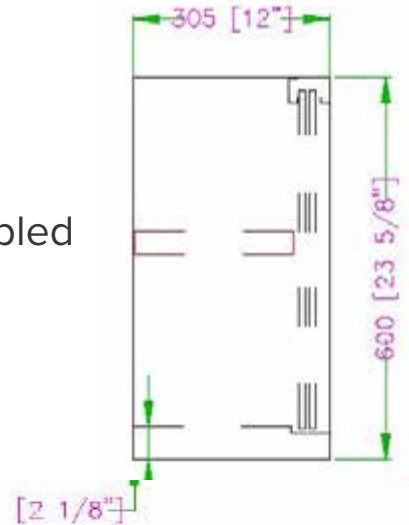


36" x 12" STAINLESS WALL CABINET TWCA-1236-SS

FEATURES



- ✓ Made with high quality 18 gauge, 430 stainless steel
- ✓ Adjustable stainless steel middle shelf included
- ✓ Dimensions: 36" x 12" x 24"
- ✓ Max load: 77 lbs
- ✓ Lock included standard
- ✓ Delivered assembled



ASSEMBLY/SUPPORT



We're on social media!

1.800.567.3620 | WWW.THORINOX.COM

MORE PRODUCTS

