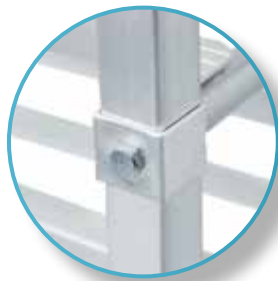
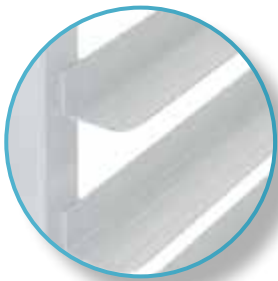


ALUMINIUM BUN PAN RACK DRACK-1218-ALUWB

FEATURES

- ✓ Dimensions: 20¼" x 26" x 69"
- ✓ Made of new aluminium
- ✓ 12 shelves for 18" x 26" bun pans
- ✓ 4 heavy duty 5" swivel caster (2 with brakes)
- ✓ Easy to assemble
- ✓ With reinforced bars in the middle



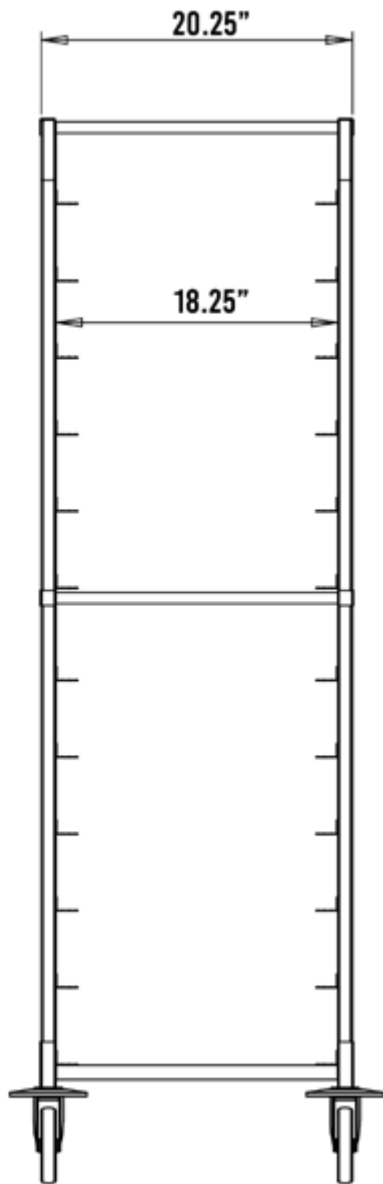
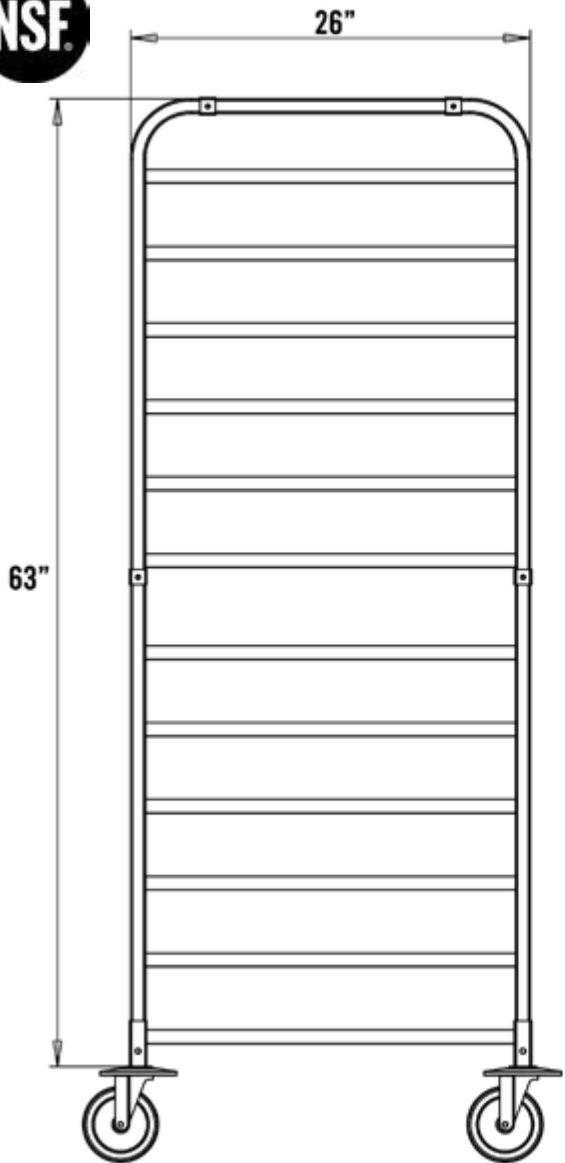
ACCESSORIES



Bumper

DRACK Cover

Casters



ASSEMBLY/SUPPORT



We're on social media!

MORE PRODUCTS

