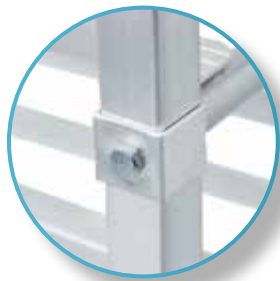
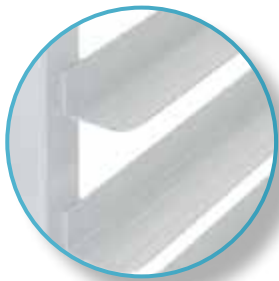


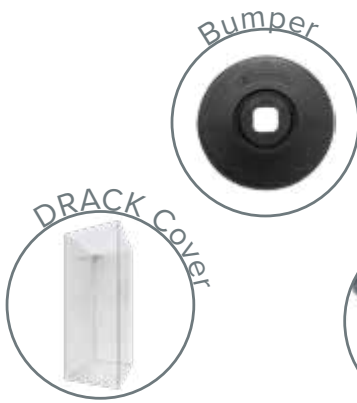
DOUBLE ALUMINIUM BUN PAN RACK DRACK-1216-ALD

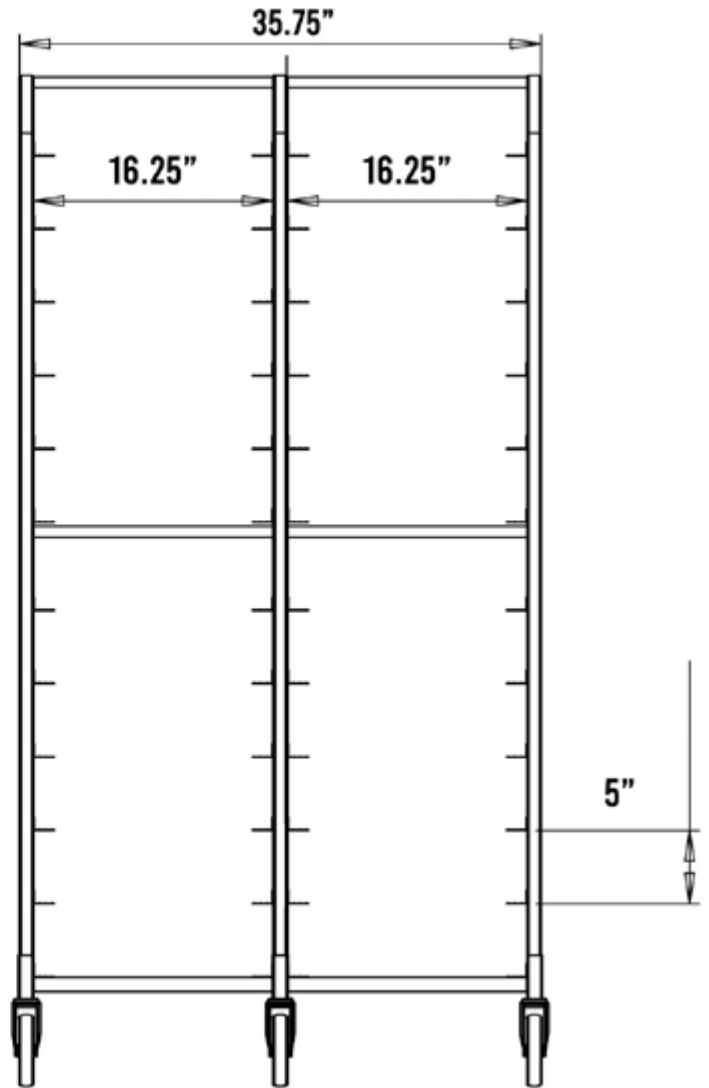
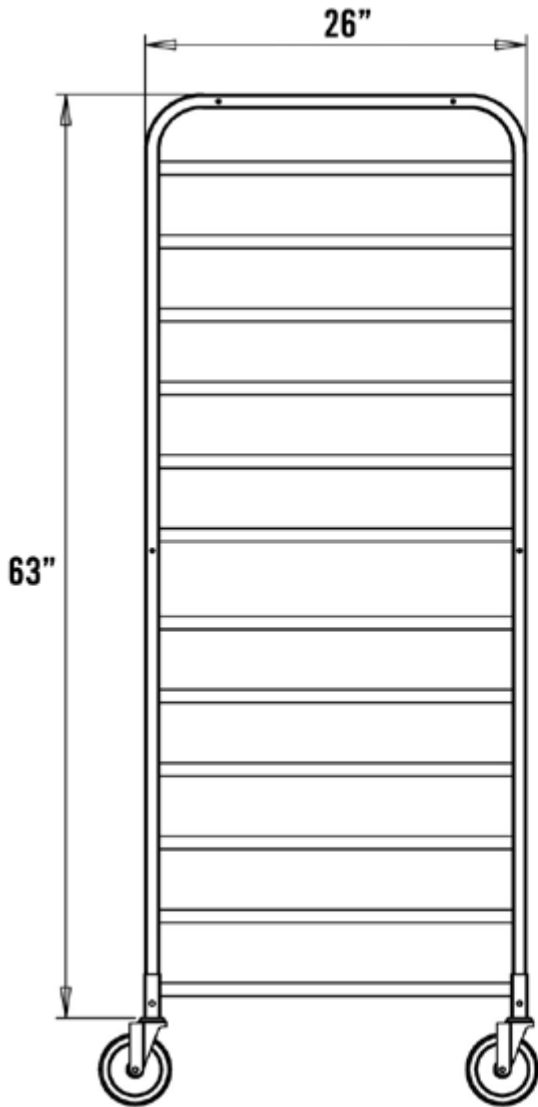
FEATURES

- ✓ Dimensions: 35³/₄" x 26" x 69"
- ✓ Made of new aluminium
- ✓ 24 shelves for 16" x 22" bun pans & 15" Rubbermaid bins
- ✓ 6 heavy duty 5" swivel caster (2 with brakes)
- ✓ Easy to assemble
- ✓ With reinforced bars in the middle



ACCESSORIES





ASSEMBLY/SUPPORT



We're on social media!

1.800.567.3620 | WWW.THORINOX.COM

MORE PRODUCTS

