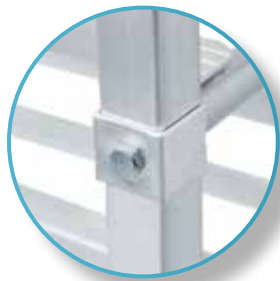
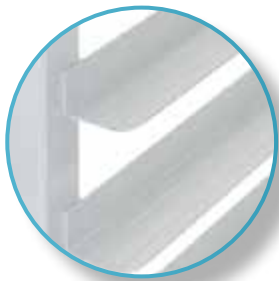


ALUMINIUM BUN PAN RACK FOR RUBBERMAID BINS DRACK-1215-ALUWB

FEATURES

- ✓ Dimensions: 18¼" x 26" x 69"
- ✓ Made of new aluminium
- ✓ 12 shelves for 15" x 21" bun pans & rubbermaid bins
- ✓ 4 heavy duty 5" swivel caster (2 with brakes)
- ✓ Easy to assemble
- ✓ With reinforced bars in the middle



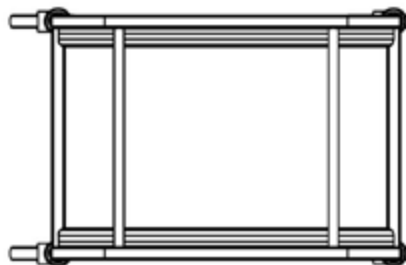
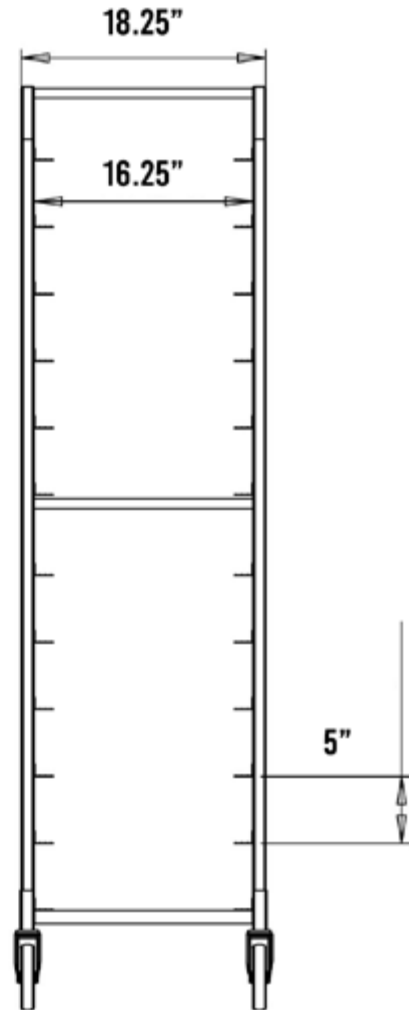
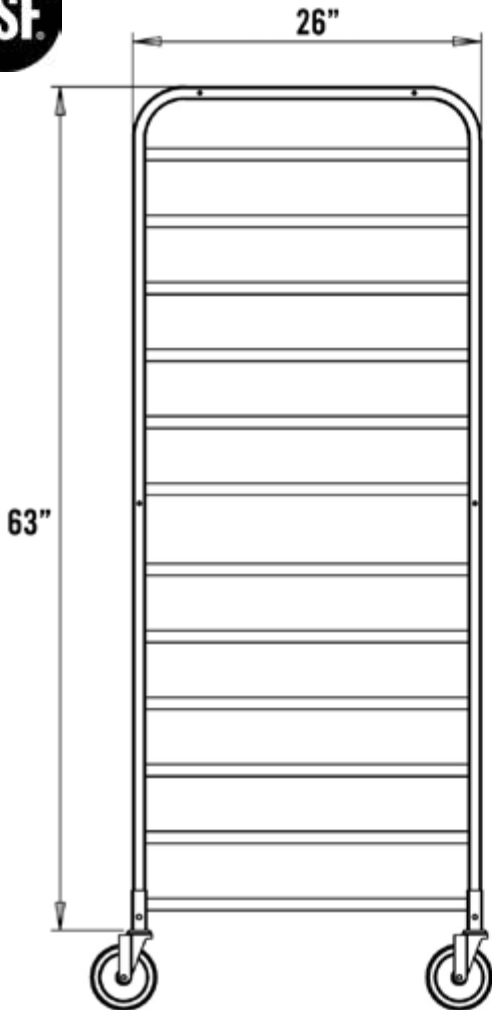
ACCESSORIES



Bumper

DRACK Cover

Casters



ASSEMBLY/SUPPORT



MORE PRODUCTS



f We're on social media! i