



2022

PRODUCT CATALOG

High quality stainless steel products

KEEP UP-TO-DATE WITH
THORINOX

-  Thorinox
-  @Thorinox
-  @Thorinox
-  Thorinox.com

BE THE FIRST TO HEAR
ABOUT PROMOS,
NEW INFORMATION
& PRODUCT LAUNCHES

TABLE OF CONTENT

Why Thorinox	03
Work Tables	04
Storage	10
Racks	13
Sinks	19
Plumbing	30
Accessories	33
Policies	38





We are a Canadian company that has built an excellent reputation throughout the years based on multiple factors that we are very proud of.

We have the best customer service you can ask for. Our dedicated employees take your needs in to account and ensure that you will be given accurate information in a timely manner.

High quality is not an option, it's a standard. We only provide products that are reliable and long lasting. We pay particular attention to small details that will make our products better and easier to use.

We keep high levels of inventory across the country to ensure we have the products you need when you need them. Our warehouses are filled and ready to process and deliver your goods in a timely and efficient manner.

We offer experienced and unmatched after-sales service. Our team is here to answer your questions by offering a first class representation that is also supported by our warranty team.

CERTIFICATIONS



All of our products are NSF certified, unless specified otherwise. All of our sinks are CSA and NSF approved.

AUTOQUOTES



All of our products, along with their specifications, can be found on AutoQuotes.

SS WORK TABLE WITH GALVANIZED STEEL UNDERSHELF (DSST-GS)



SS WORK TABLE WITH 5" BACKSPLASH AND GALVANIZED STEEL UNDERSHELF (DSST-BK)



STANDARD FEATURES

- Made with 18 gauge, 430 stainless steel (top)
- Galvanized steel legs and adjustable undershelf
- Easy to assemble
- Stronger and non-welded corners
- Hat channel on the bottom of 48" models and up

OPTIONAL ACCESSORIES

- Extra galvanized undershelf
- Set of swivel casters
- Brace bar kit
- Drawers
- Legs for 36" high table

WORK TABLES

Model	L	W	H	Max Load (top)	Max Load (bottom)
DSST-2424-GS	24"	24"	34"	330 lbs	110 lbs
DSST-2430-GS	30"	24"	34"	400 lbs	132 lbs
DSST-2436-GS	36"	24"	34"	400 lbs	132 lbs
DSST-2448-GS	48"	24"	34"	400 lbs	132 lbs
DSST-2460-GS	60"	24"	34"	375 lbs	110 lbs
DSST-2472-GS	72"	24"	34"	375 lbs	110 lbs
DSST-2484-GS	84"	24"	34"	400 lbs	132 lbs
DSST-2496-GS	96"	24"	34"	400 lbs	132 lbs

DSST-3012-GS	12"	30"	34"	265 lbs	100 lbs
DSST-3015-GS	15"	30"	34"	265 lbs	100 lbs
DSST-3018-GS	18"	30"	34"	265 lbs	100 lbs
DSST-3024-GS	24"	30"	34"	300 lbs	132 lbs
DSST-3030-GS	30"	30"	34"	375 lbs	132 lbs
DSST-3036-GS	36"	30"	34"	400 lbs	132 lbs
DSST-3048-GS	48"	30"	34"	400 lbs	132 lbs
DSST-3060-GS	60"	30"	34"	400 lbs	132 lbs
DSST-3072-GS	72"	30"	34"	375 lbs	110 lbs
DSST-3084-GS	84"	30"	34"	400 lbs	132 lbs
DSST-3096-GS	96"	30"	34"	400 lbs	132 lbs

Model	L	W	H*	Max Load (top)	Max Load (bottom)
DSST-2424-BK	24"	24"	34"	330 lbs	110 lbs
DSST-2430-BK	30"	24"	34"	400 lbs	132 lbs
DSST-2436-BK	36"	24"	34"	400 lbs	132 lbs
DSST-2448-BK	48"	24"	34"	400 lbs	132 lbs
DSST-2460-BK	60"	24"	34"	375 lbs	110 lbs
DSST-2472-BK	72"	24"	34"	375 lbs	110 lbs
DSST-2484-BK	84"	24"	34"	400 lbs	132 lbs
DSST-2496-BK	96"	24"	34"	400 lbs	132 lbs

DSST-3024-BK	24"	30"	34"	300 lbs	132 lbs
DSST-3030-BK	30"	30"	34"	375 lbs	132 lbs
DSST-3036-BK	36"	30"	34"	400 lbs	132 lbs
DSST-3048-BK	48"	30"	34"	400 lbs	132 lbs
DSST-3060-BK	60"	30"	34"	400 lbs	132 lbs
DSST-3072-BK	72"	30"	34"	375 lbs	110 lbs
DSST-3084-BK	84"	30"	34"	400 lbs	132 lbs
DSST-3096-BK	96"	30"	34"	400 lbs	132 lbs

*Height excludes 5" backsplash

SS WORK TABLE WITH STAINLESS STEEL UNDERSHELF (DSST-SS)



SS WORK TABLE WITH STAINLESS STEEL UNDERSHELF AND 5" BACKSPLASH (DSST-BKSS)



STANDARD FEATURES

- Made with 18 gauge, 430 stainless steel
- Stainless steel legs, undershelf, and bulletfeet
- Easy to assemble
- Stronger and 450 welded corners

OPTIONAL ACCESSORIES

- Extra stainless steel undershelf
- Set of swivel casters
- Brace bar kit
- Drawers
- Legs for 36" high table

Model	L	W	H	Max Load (top)	Max Load (bottom)
DSST-2424-SS	24"	24"	34"	330 lbs	110 lbs
DSST-2430-SS	30"	24"	34"	396 lbs	132 lbs
DSST-2436-SS	36"	24"	34"	396 lbs	132 lbs
DSST-2448-SS	48"	24"	34"	396 lbs	110 lbs
DSST-2460-SS	60"	24"	34"	375 lbs	110 lbs
DSST-2472-SS	72"	24"	34"	330 lbs	110 lbs
DSST-2484-SS	84"	24"	34"	396 lbs	132 lbs
DSST-2496-SS	96"	24"	34"	396 lbs	132 lbs

DSST-3012-SS	12"	30"	34"	265 lbs	88 lbs
DSST-3015-SS	15"	30"	34"	265 lbs	88 lbs
DSST-3018-SS	18"	30"	34"	265 lbs	88 lbs
DSST-3024-SS	24"	30"	34"	330 lbs	110 lbs
DSST-3030-SS	30"	30"	34"	396 lbs	132 lbs
DSST-3036-SS	36"	30"	34"	396 lbs	132 lbs
DSST-3048-SS	48"	30"	34"	396 lbs	132 lbs
DSST-3060-SS	60"	30"	34"	375 lbs	110 lbs
DSST-3072-SS	72"	30"	34"	330 lbs	110 lbs
DSST-3084-SS	84"	30"	34"	396 lbs	132 lbs
DSST-3096-SS	96"	30"	34"	396 lbs	132 lbs

Model	L	W	H*	Max Load (top)	Max Load (bottom)
DSST-2424-BKSS	24"	24"	34"	330 lbs	110 lbs
DSST-2430-BKSS	30"	24"	34"	396 lbs	132 lbs
DSST-2436-BKSS	36"	24"	34"	396 lbs	132 lbs
DSST-2448-BKSS	48"	24"	34"	396 lbs	132 lbs
DSST-2460-BKSS	60"	24"	34"	375 lbs	110 lbs
DSST-2472-BKSS	72"	24"	34"	330 lbs	110 lbs
DSST-2484-BKSS	84"	24"	34"	396 lbs	132 lbs
DSST-2496-BKSS	96"	24"	34"	396 lbs	132 lbs
DSST-3024-BKSS	24"	30"	34"	330 lbs	110 lbs
DSST-3030-BKSS	30"	30"	34"	396 lbs	132 lbs
DSST-3036-BKSS	36"	30"	34"	396 lbs	132 lbs
DSST-3048-BKSS	48"	30"	34"	396 lbs	132 lbs
DSST-3060-BKSS	60"	30"	34"	375 lbs	110 lbs
DSST-3072-BKSS	72"	30"	34"	330 lbs	110 lbs
DSST-3084-BKSS	84"	30"	34"	396 lbs	132 lbs
DSST-3096-BKSS	96"	30"	34"	396 lbs	132 lbs

*Height excludes 5" backsplash

STAINLESS STEEL WORK TABLE WITH POLYTOP (DSST-PT)**



**SPECIAL ORDER ITEM – CONTACT A REPRESENTATIVE

STANDARD FEATURES

- Made with 18 gauge, 430 stainless steel
- Undershelf for better stability
- Easy to assemble
- Cutting boards available in 0.75" and 1" thickness

Model	L	W	H	Max Load (top)	Max Load (bottom)
DSST-3036-PT	36"	30"	34"	400 lbs	132 lbs
DSST-3048-PT	48"	30"	34"	400 lbs	132 lbs
DSST-3060-PT	60"	30"	34"	400 lbs	132 lbs
DSST-3072-PT	72"	30"	34"	375 lbs	110 lbs

POLYTOP CUTTING BOARDS

Model	L	W	Thickness
TCB-3036-19	36"	30"	0.75"
TCB-3048-19	48"	30"	0.75"
TCB-3060-19	60"	30"	0.75"
TCB-3072-19	72"	30"	0.75"
TCB-3036-25	36"	30"	1"
TCB-3048-25	48"	30"	1"
TCB-3060-25	60"	30"	1"
TCB-3072-25	72"	30"	1"



DID YOU KNOW?

Cutting boards should be washed and disinfected after each use. Simply cleaning with warm water and soap will not kill bacteria. To disinfect, you must use commercial-grade disinfectant or put the cutting boards in the dishwasher. Once the cutting boards have been thoroughly cleaned and disinfected, store them upright, not piled on top of each other.

STAINLESS STEEL UNDERSHELF (DUS-SS)



**DESIGNED FOR SS AND BKSS WORK TABLES

GALVANIZED STEEL UNDERSHELF (DUS-GS)



**DESIGNED FOR GS AND BK WORK TABLES

EQUIPMENT STAND WITH STAINLESS STEEL TOP, LEGS, AND UNDERSHELF (DSTAND-SS)



EQUIPMENT STAND WITH STAINLESS STEEL TOP AND LEGS, WITH GALVANIZED STEEL UNDERSHELF (DSTAND-GS)



STANDARD FEATURES

- Made with high quality 18 gauge, 430 stainless steel
- Various sizes to fit your needs
- Welded corners

Model	L*	W*	Max Load
DUS-2424-SS	24"	24"	110 lbs
DUS-2430-SS	30"	24"	132 lbs
DUS-2436-SS	36"	24"	132 lbs
DUS-2448-SS	48"	24"	132 lbs
DUS-2460-SS	60"	24"	110 lbs
DUS-2472-SS	72"	24"	110 lbs
DUS-2484-SS	84"	24"	132 lbs
DUS-2496-SS	96"	24"	132 lbs
DUS-3012-SS	12"	30"	88 lbs
DUS-3015-SS	15"	30"	88 lbs
DUS-3018-SS	18"	30"	88 lbs
DUS-3024-SS	24"	30"	110 lbs
DUS-3030-SS	30"	30"	132 lbs
DUS-3036-SS	36"	30"	132 lbs
DUS-3048-SS	48"	30"	132 lbs
DUS-3060-SS	60"	30"	110 lbs
DUS-3072-SS	72"	30"	110 lbs
DUS-3084-SS	84"	30"	132 lbs
DUS-3096-SS	96"	30"	132 lbs

*Fits size of table

STANDARD FEATURES

- Made with galvanized steel
- Various sizes to fit your needs
- Non-welded corners

** Does not fit on Poly Top Tables

Model	L*	W*	Max Load
DUS-2424-GS	24"	24"	110 lbs
DUS-2430-GS	30"	24"	132 lbs
DUS-2436-GS	36"	24"	132 lbs
DUS-2448-GS	48"	24"	132 lbs
DUS-2460-GS	60"	24"	110 lbs
DUS-2472-GS	72"	24"	110 lbs
DUS-2484-GS	84"	24"	132 lbs
DUS-2496-GS	96"	24"	132 lbs
DUS-3012-GS	12"	30"	88 lbs
DUS-3015-GS	15"	30"	88 lbs
DUS-3018-GS	18"	30"	88 lbs
DUS-3024-GS	24"	30"	110 lbs
DUS-3030-GS	30"	30"	132 lbs
DUS-3036-GS	36"	30"	132 lbs
DUS-3048-GS	48"	30"	132 lbs
DUS-3060-GS	60"	30"	110 lbs
DUS-3072-GS	72"	30"	110 lbs
DUS-3084-GS	84"	30"	132 lbs
DUS-3096-GS	96"	30"	132 lbs

*Fits size of table

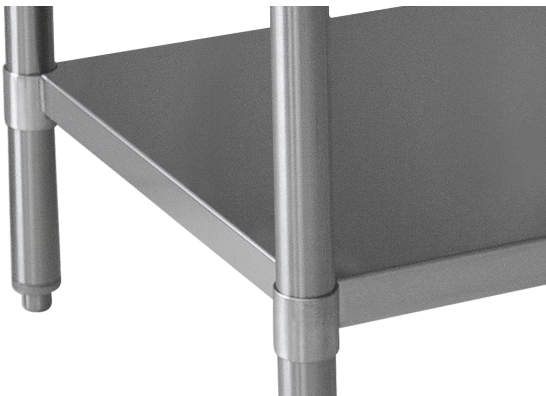
STANDARD FEATURES

- Stainless steel adjustable undershelf and legs
- Stronger and welded corners
- 18 gauge, 430 stainless steel
- Stainless steel bulletfeet
- 3" side size including the rim

OPTIONAL ACCESSORIES

- Set of swivel casters
- Extra stainless steel undershelf
- Drawers
- Braces

Model	L	W	H	Max Load
DSTAND-2424-SS	24"	24"	22"	485 lbs
DSTAND-3018-SS	18"	30"	22"	440 lbs
DSTAND-3024-SS	24"	30"	22"	485 lbs
DSTAND-3030-SS	30"	30"	22"	550 lbs
DSTAND-3036-SS	36"	30"	22"	550 lbs
DSTAND-3048-SS	48"	30"	22"	550 lbs



STANDARD FEATURES

- Galvanized steel undershelf and legs
- Stronger and non-welded corners
- 18 gauge, 430 stainless steel
- Plastic bulletfeet
- 3" side size including the rim

OPTIONAL ACCESSORIES

- Set of swivel casters
- Extra galvanized steel undershelf
- Drawers
- Braces

Model	L	W	H	Max Load
DSTAND-2412-GS	12"	24"	22"	275 lbs
DSTAND-2415-GS	15"	24"	22"	290 lbs
DSTAND-2418-GS	18"	24"	22"	310 lbs
DSTAND-2424-GS	24"	24"	22"	330 lbs
DSTAND-2430-GS	30"	24"	22"	350 lbs
DSTAND-2436-GS	36"	24"	22"	375 lbs
DSTAND-2448-GS	48"	24"	22"	400 lbs
DSTAND-2460-GS	60"	24"	22"	425 lbs
DSTAND-2472-GS	72"	24"	22"	450 lbs
DSTAND-3012-GS	12"	30"	22"	300 lbs
DSTAND-3015-GS	15"	30"	22"	325 lbs
DSTAND-3018-GS	18"	30"	22"	350 lbs
DSTAND-3024-GS	24"	30"	22"	375 lbs
DSTAND-3030-GS	30"	30"	22"	400 lbs
DSTAND-3036-GS	36"	30"	22"	425 lbs
DSTAND-3048-GS	48"	30"	22"	450 lbs
DSTAND-3060-GS	60"	30"	22"	475 lbs
DSTAND-3072-GS	72"	30"	22"	500 lbs

DRAWERS (TDRS/TDRD)



TDRD-3018-SS

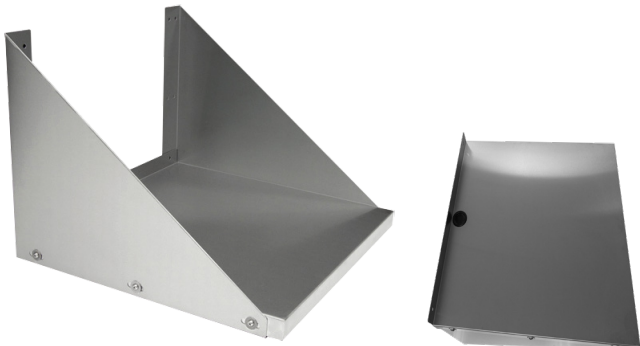
STANDARD FEATURES

- Made with 22 gauge, 430 stainless steel
- Universal drawers that can fit on any 24" and 30" deep Thorinox stainless steel table
- Heavy duty drawer brackets
- Easy to install

Model	D*	W**	H	Max Load
TDRS-2418-SS	24"	18"	6"	22 lbs
TDRS-2424-SS	24"	24"	6"	22 lbs
TDRS-3018-SS	30"	18"	6"	22 lbs
TDRS-3024-SS	30"	24"	6"	22 lbs
TDRD-2418-SS	24"	18"	6"	44 lbs
TDRD-3018-SS	30"	18"	6"	44 lbs

*Drawer depth without braces
**Fits table depth of

STAINLESS STEEL MICROWAVE SHELF (TMWS-SS)



STANDARD FEATURES

- Made with 18 gauge, 430 stainless steel
- Reversible angles
- Can support up to 60 lbs
- Hole for wires with rubber ring standard

Model	L	W
TMWS-2418-SS	18"	24"
TMWS-2424-SS	24"	24"

STAINLESS STEEL KNOCKDOWN CABINET



TKCA-BK



TKCA-SS

STANDARD FEATURES

- Made with 18 gauge, 430 stainless steel
- Adjustable interior stainless steel shelf included
- Delivered knocked down (TKCA models)
- Delivered assembled (TCAD models)
- 5" backsplash on TKCA-BK models

OPTIONAL ACCESSORIES

- Set of swivel casters

CABINET WITH DRAWERS (TCAD)



Model	L	W	H*	Top Max Load
TKCA-3048-SS	48"	30"	34"	88 lbs
TKCA-3060-SS	60"	30"	34"	60 lbs
TKCA-3072-SS	72"	30"	34"	55 lbs
TKCA-3048-BK	48"	30"	34"	88 lbs
TKCA-3060-BK	60"	30"	34"	66 lbs
TKCA-3072-BK	72"	30"	34"	55 lbs
TCAD-2436-SS	36"	24"	34"	88 lbs
TCAD-2448-SS	48"	24"	34"	88 lbs
TCAD-3048-SS	48"	30"	34"	88 lbs
TCAD-3060-SS	60"	30"	34"	88 lbs

*Height includes 5" legs, does not include 5" backsplash

OVEN STAND (TOS-SS)



STANDARD FEATURES

- Ideal for 24" to 40" wide ovens
- Integrated pan rack
- 5" casters standard

Model	L	W	H
TOS-3235-SS	32"	29"	35"
TOS-3935-SS	39"	34"	35"
TOS-3925-SS	39"	34"	25"



STAINLESS STEEL WALL CABINET (TWCA-SS)



STANDARD FEATURES

- Made with 22 gauge, 430 stainless steel
- Delivered assembled
- Adjustable stainless steel middle shelf
- Lock standard

Model	L	W	H	Shelf Max Load
TWCA-1224-SS	24"	12"	24"	22 lbs
TWCA-1236-SS	36"	12"	24"	22 lbs
TWCA-1248-SS	48"	12"	24"	22 lbs
TWCA-1260-SS	60"	12"	24"	22 lbs
TWCA-1424-SS	24"	14"	24"	22 lbs
TWCA-1436-SS	36"	14"	24"	22 lbs
TWCA-1448-SS	48"	14"	24"	22 lbs
TWCA-1460-SS	60"	14"	24"	22 lbs

STAINLESS STEEL OPEN WALL CABINET (TWCO-SS)



STANDARD FEATURES

- Made with 22 gauge, 430 stainless steel
- Delivered assembled
- Adjustable stainless steel middle shelf

Model	L	W	H	Shelf Max Load
TWCO-1236-SS	36"	12"	24"	22 lbs
TWCO-1248-SS	48"	12"	24"	22 lbs
TWCO-1436-SS	36"	14"	24"	22 lbs
TWCO-1448-SS	48"	14"	24"	22 lbs

OPEN STORAGE CABINET (TKOC-SS)



STANDARD FEATURES

- Made with 18 gauge, 430 stainless steel
- Delivered knocked down
- Adjustable middle shelf
- Optional: casters

Model	L	W	H	Shelf Max Load
TKOC-1536-SS	36"	15"	34"	55 lbs
TKOC-1548-SS	48"	15"	34"	55 lbs
TKOC-1560-SS	60"	15"	34"	44 lbs
TKOC-1572-SS	72"	15"	34"	33 lbs
TKOC-1836-SS	36"	18"	34"	55 lbs
TKOC-1848-SS	48"	18"	34"	55 lbs
TKOC-1860-SS	60"	18"	34"	44 lbs
TKOC-1872-SS	72"	18"	34"	33 lbs

STAINLESS STEEL WALL MOUNT SHELF (TWSS-SS)



STANDARD FEATURES

- Made with 18 gauge, 430 stainless steel
- Vibration insulation

Model	L	W	Max Load
TWSS-1224-SS	24"	12"	55 lbs
TWSS-1230-SS	30"	12"	55 lbs
TWSS-1236-SS	36"	12"	66 lbs
TWSS-1248-SS	48"	12"	99 lbs
TWSS-1260-SS	60"	12"	110 lbs
TWSS-1272-SS	72"	12"	99 lbs
TWSS-1284-SS	84"	12"	99 lbs
TWSS-1296-SS	96"	12"	110 lbs
TWSS-1424-SS	24"	14"	55 lbs
TWSS-1430-SS	30"	14"	55 lbs
TWSS-1436-SS	36"	14"	66 lbs
TWSS-1448-SS	48"	14"	99 lbs
TWSS-1460-SS	60"	14"	110 lbs
TWSS-1472-SS	72"	14"	99 lbs
TWSS-1484-SS	84"	14"	99 lbs
TWSS-1496-SS	96"	14"	110 lbs
TWSS-1636-SS	36"	16"	66 lbs
TWSS-1648-SS	48"	16"	99 lbs
TWSS-1660-SS	60"	16"	110 lbs
TWSS-1672-SS	72"	16"	99 lbs
TWSS-1684-SS	84"	16"	99 lbs
TWSS-1696-SS	96"	16"	110 lbs

“PASS THRU” OVERSHELF WITH ADJUSTABLE MIDDLE SHELF (TDOS-SS)



STANDARD FEATURES

- Made with 18 gauge, 430 stainless steel
- Easy to assemble
- Adjustable middle shelf
- Optional: additional shelf

Model	L	W	H	Max Load Top/Bottom
TDOS-1236-SS	36"	12"	28.5"	22 / 22 lbs
TDOS-1248-SS	48"	12"	28.5"	22 / 22 lbs
TDOS-1260-SS	60"	12"	28.5"	17 / 17 lbs
TDOS-1272-SS	72"	12"	28.5"	13 / 13 lbs
TDOS-1284-SS	84"	12"	28.5"	33 / 33 lbs
TDOS-1296-SS	96"	12"	28.5"	33 / 33 lbs
TDOS-1436-SS	36"	14"	28.5"	22 / 22 lbs
TDOS-1448-SS	48"	14"	28.5"	22 / 22 lbs
TDOS-1460-SS	60"	14"	28.5"	17 / 17 lbs
TDOS-1472-SS	72"	14"	28.5"	13 / 13 lbs
TDOS-1484-SS	84"	14"	28.5"	33 / 33 lbs
TDOS-1496-SS	96"	14"	28.5"	33 / 33 lbs
TDOS-1636-SS	36"	16"	28.5"	22 / 22 lbs
TDOS-1648-SS	48"	16"	28.5"	22 / 22 lbs
TDOS-1660-SS	60"	16"	28.5"	17 / 17 lbs
TDOS-1672-SS	72"	16"	28.5"	13 / 13 lbs

RACKS

ALUMINUM BUN PAN RACKS (ALUN | ALUWB)



STANDARD FEATURES

- Made with new aluminum
 - Delivered knocked down (easy to assemble)
 - Double welded tray slides
 - Reinforcement bars in the middle (ALUWB models)
- Racks can accommodate 18" x 26" bun pans (except DRACK-1215-ALUWB and DRACK-1221-ALUWB)

** DRACK-1215-ALUWB is designed to accommodate 15" Rubbermaid bins.
*** DRACK-1221-ALUWB is designed to accommodate dish racks.

OPTIONAL ACCESSORIES

- Cover (for full size models only)
- Bumpers for casters

Model	Exterior Width	Interior Width	Depth	Height*	Shelves	Spacing	Max Load per shelf
DRACK-0718-ALUNB**	20.25"	18.25"	26"	31.5"	7	3"	50 lbs
DRACK-1018-ALUNB**	20.25"	18.25"	26"	41.75"	10	3"	50 lbs
DRACK-1215-ALUWB	18.25"	16.25"	26"	69"	12	5"	50 lbs
DRACK-1218-ALUWB	20.25"	18.25"	26"	69"	12	5"	50 lbs
DRACK-1221-ALUWB	22.5"	20.5"	26"	69"	12	5"	50 lbs
DRACK-2018-ALUWBE	20.25"	18.25"	26"	69"	20	3"	50 lbs

*Height includes casters
**Half size model with aluminum flat top

STACKABLE “Z” RACKS (DRACK-Z)

Model	Exterior Width	Interior Width	Depth	Height*	Shelves	Spacing	Max Load per shelf
DRACK-1018-Z	20"	18"	26"	38.5"	10	3"	50 lbs
DRACK-2018-Z	20"	18"	26"	69"	20	3"	50 lbs

*Height includes casters

STAINLESS STEEL BUN PAN RACKS (DRACK-SS)



STANDARD FEATURES

- All stainless steel
 - 18 gauge, 201 stainless steel
 - Delivered knocked down (easy to assemble)
 - Double welded tray slides
- Non-marking casters
 - Racks can accommodate 18" x 26" bun pans (except TRACK-1418-SS)

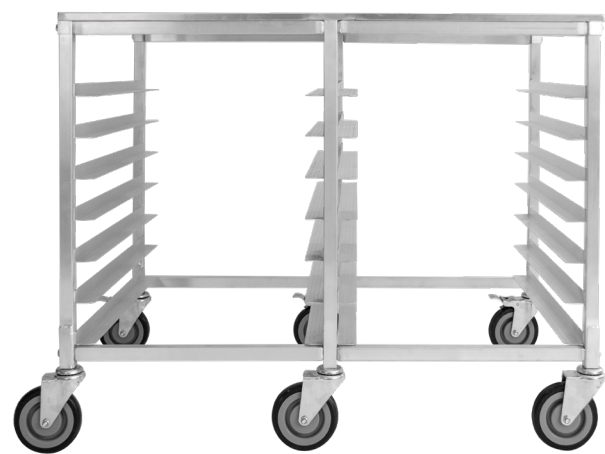
Model	Exterior Width	Interior Width	Depth	Height*	Shelves	Spacing	Max Load per shelf
DRACK-1218-SS	20.25"	18.25"	26"	69"	12	5"	44 lbs
DRACK-2018-SS	20.25"	18.25"	26"	69"	20	3"	26 lbs

*Height includes casters

RACK FOR REFRIGERATORS

Model	Exterior Width	Interior Width	Depth	Height	Shelves	Spacing	Max Load per shelf
TRACK-1418-SS	20.25"	18.25"	22"	51.5"	14	3"	33 lbs

DOUBLE ALUMINUM RACKS (DRACK-ALD)



DRACK-0718-ALD



DRACK-1216-ALD

STANDARD FEATURES

- Made with new aluminum
- Delivered knocked down (easy to assemble)
- Double welded tray slides
- Fits below countertops
- Holds 13" x 18", 14" x 18" fast food trays and 18" x 26" pans

OPTIONAL ACCESSORIES

- Support bars
- Cover

Model	Exterior Width	Interior Width (per side)	Depth	Height*	Shelves	Spacing	Max Load per shelf
DRACK-0718-ALD	40"	18.25"	26"	33"	14	3"	50 lbs
DRACK-1216-ALD	35.75"	16.25"	26"	69"	24	5"	50 lbs

*Height includes casters

STANDARD FEATURES

- Made with new aluminum
- Delivered knocked down (easy to assemble)
- Rounded corners
- Double welded tray slides
- Holds 16" x 22" bun pans and 15" Rubbermaid bins

OPTIONAL ACCESSORIES

- Support bars
- Cover

PIZZA PLATES (TPPT)**



**SPECIAL ORDER ITEM – CONTACT A REPRESENTATIVE

PIZZA SCREENS (TPPS)**



**SPECIAL ORDER ITEM – CONTACT A REPRESENTATIVE

STANDARD FEATURES

- Made with aluminum
- Sizes range from 8" to 20"

Model	Diameter	Thickness	Quantity
TPPT-8N	8"	0.82mm	Box of 12
TPPT-9N	9"	0.82mm	Box of 12
TPPT-10N	10"	0.82mm	Box of 12
TPPT-11N	11"	0.82mm	Box of 12
TPPT-12N	12"	0.82mm	Box of 12
TPPT-13N	13"	0.82mm	Box of 12
TPPT-14N	14"	0.82mm	Box of 12
TPPT-15N	15"	0.82mm	Box of 12
TPPT-16N	16"	0.82mm	Box of 12
TPPT-17N	17"	0.82mm	Box of 12
TPPT-18N	18"	0.82mm	Box of 12
TPPT-19N	19"	0.82mm	Box of 12
TPPT-20N	20"	0.82mm	Box of 12

STANDARD FEATURES

- Made with aluminum
- Sizes range from 8" to 20"

Model	Diameter	Thickness	Quantity
TPPS-8	8"	0.82mm	Box of 12
TPPS-9	9"	0.82mm	Box of 12
TPPS-10	10"	0.82mm	Box of 12
TPPS-11	11"	0.82mm	Box of 12
TPPS-12	12"	0.82mm	Box of 12
TPPS-13	13"	0.82mm	Box of 12
TPPS-14	14"	0.82mm	Box of 12
TPPS-15	15"	0.82mm	Box of 12
TPPS-16	16"	0.82mm	Box of 12
TPPS-17	17"	0.82mm	Box of 12
TPPS-18	18"	0.82mm	Box of 12
TPPS-19	19"	0.82mm	Box of 12
TPPS-20	20"	0.82mm	Box of 12

GREEN EPOXY WIRESHELVES (TGES)



Model	L	W	Max Load
TGES-1424	14"	24"	750 lbs
TGES-1430	14"	30"	750 lbs
TGES-1436	14"	36"	750 lbs
TGES-1442	14"	42"	750 lbs
TGES-1448	14"	48"	750 lbs
TGES-1454	14"	54"	600 lbs
TGES-1460	14"	60"	600 lbs
TGES-1472	14"	72"	600 lbs
TGES-1824	18"	24"	750 lbs
TGES-1830	18"	30"	750 lbs
TGES-1836	18"	36"	750 lbs
TGES-1842	18"	42"	750 lbs
TGES-1848	18"	48"	750 lbs
TGES-1854	18"	54"	600 lbs
TGES-1860	18"	60"	600 lbs
TGES-1872	18"	72"	600 lbs
TGES-2124	21"	24"	750 lbs
TGES-2130	21"	30"	750 lbs
TGES-2136	21"	36"	750 lbs
TGES-2142	21"	42"	750 lbs
TGES-2148	21"	48"	750 lbs
TGES-2154	21"	54"	600 lbs
TGES-2160	21"	60"	600 lbs
TGES-2172	21"	72"	600 lbs
TGES-2424	24"	24"	750 lbs
TGES-2430	24"	30"	750 lbs
TGES-2436	24"	36"	750 lbs
TGES-2442	24"	42"	750 lbs
TGES-2448	24"	48"	750 lbs
TGES-2454	24"	54"	600 lbs
TGES-2460	24"	60"	600 lbs
TGES-2472	24"	72"	600 lbs

Model	L
TGEP-13	13"
TGEP-34	34"
TGEP-54	54"
TGEP-64	64"
TGEP-72	72"
TGEP-84	84"

STANDARD FEATURES

- Various sizes to fit your needs
- Easy to assemble
- Numbered posts, multiple heights available
- Reinforced in the middle
- Sold in sets of 4
- Black post clips included
- LIFETIME WARRANTY** on epoxy coating

OPTIONAL ACCESSORIES (SEE PAGE 36)

- Set of swivel casters (2 with brakes, 2 without)
- Wall brackets
- Clamps
- S-Hooks
- Adjustable screw-in foot plate
- Wall mount bracket
- Single rail

** Warranty voided if shelving is installed in a humid or salty environment.

CHROME FINISH WIRESHELVES (TCFS)



Model	L	W	Max Load
TCFS-1424	14"	24"	750 lbs
TCFS-1430	14"	30"	750 lbs
TCFS-1436	14"	36"	750 lbs
TCFS-1442	14"	42"	750 lbs
TCFS-1448	14"	48"	750 lbs
TCFS-1454	14"	54"	600 lbs
TCFS-1460	14"	60"	600 lbs
TCFS-1472	14"	72"	600 lbs
TCFS-1824	18"	24"	750 lbs
TCFS-1830	18"	30"	750 lbs
TCFS-1836	18"	36"	750 lbs
TCFS-1842	18"	42"	750 lbs
TCFS-1848	18"	48"	750 lbs
TCFS-1854	18"	54"	600 lbs
TCFS-1860	18"	60"	600 lbs
TCFS-1872	18"	72"	600 lbs
TCFS-2124	21"	24"	750 lbs
TCFS-2130	21"	30"	750 lbs
TCFS-2136	21"	36"	750 lbs
TCFS-2142	21"	42"	750 lbs
TCFS-2148	21"	48"	750 lbs
TCFS-2154	21"	54"	600 lbs
TCFS-2160	21"	60"	600 lbs
TCFS-2172	21"	72"	600 lbs
TCFS-2424	24"	24"	750 lbs
TCFS-2430	24"	30"	750 lbs
TCFS-2436	24"	36"	750 lbs
TCFS-2442	24"	42"	750 lbs
TCFS-2448	24"	48"	750 lbs
TCFS-2454	24"	54"	600 lbs
TCFS-2460	24"	60"	600 lbs
TCFS-2472	24"	72"	600 lbs

CHROME FINISH WINE SHELVES (TCWS)



STANDARD FEATURES

- Various sizes to fit your needs
- Easy to assemble
- Numbered posts, multiple heights available
- Reinforced in the middle
- Sold in sets of 4
- Black post clips included

OPTIONAL ACCESSORIES (SEE PAGE 36)

- Set of swivel casters (2 with brake, 2 without)
- Wall brackets
- Clamps
- S-Hooks
- Adjustable screw-in foot plate
- Price tag channels

Model	L	W	Bottles Per Shelf
TCWS-1436	14"	36"	9
TCWS-1448	14"	48"	12

Model	L
TCFP-13	13"
TCFP-34	34"
TCFP-54	54"
TCFP-64	64"
TCFP-72	72"
TCFP-84	84"

18" SINGLE SINKS (TSS)



STANDARD FEATURES

- Made with 18 gauge, 304 stainless steel
- Well-polished welded seams
- Die-stamped creased drainboards for positive drainage
- Curved corners and rolled edges
- 6.5" backsplash with 45° return
- Stainless steel legs, braces and bulletfeet
- Faucet hole at 8" from centre
- Strainer, drain and 10" overflow included
- Wall bracket included

OPTIONAL ACCESSORIES (SEE PAGE 33)

- Set of "U" shaped reinforcement bars (brace bar kit)
- Casters

SINGLE SINKS

Model	Bowl Size			Overall Size		
	L	W	H	L	W	H
TSS-1818-0*	18"	18"	11"	23"	23.5"	36.5"
TSS-2020-0*	20"	20"	12"	25.5"	25"	36.5"
TSS-1821-0	18"	21"	11"	26.5"	23"	36.5"

*Sold without brace kit

SINGLE SINKS WITH DRAINBOARD

Model	Bowl Size			Overall Size			Drainboard	
	L	W	H	L	W	H**	Side	Size
TSS-1818-L18*	18"	18"	11"	38.5"	23.5"	36.5"	Left	18"
TSS-1818-R18*	18"	18"	11"	38.5"	23.5"	36.5"	Right	18"
TSS-1818-RL18*	18"	18"	11"	54"	23.5"	36.5"	Left and Right	18"
TSS-1821-L18	18"	21"	11"	38.5"	26.5"	36.5"	Left	18"
TSS-1821-R18	18"	21"	11"	38.5"	26.5"	36.5"	Right	18"

*Sold without brace kit

** Below the drainboard

24" SINGLE SINKS (TSS)



STANDARD FEATURES

- Made with 18 gauge, 304 stainless steel
- Well-polished welded seams
- Die-stamped creased drainboards for positive drainage
- Curved corners and rolled edges
- 6.5" backsplash with 45° return
- Wall mount bracket included
- Stainless steel legs, braces and bulletfeet
- 2424-C and 2430-C models have a centre drain
- TSS-2430-C can accomodate 18" x 26" bun pans
- Strainer, regular drain and 12" overflow included
- Faucet holes 8" center

OPTIONAL ACCESSORIES (SEE PAGE 33)

- Casters
- TDW-basket
- TLD centre drain with crank (for TSS-2424-C and TSS-2430-C)

SINGLE SINKS

Model	Bowl Size			Overall Size		
	L	W	H	L	W	H
TSS-2424-0	24"	24"	14"	29.5"	29"	36.5"
TSS-2424-C	24"	24"	14"	30"	30"	36.5"
TSS-2430-C	24"	30"	14"	35"	30"	36.5"

SINGLE SINKS WITH DRAINBOARD

Model	Bowl Size			Overall Size			Drainboard	
	L	W	H	L	W	H*	Side	Size
TSS-2424-L24	24"	24"	14"	50.5"	29.5"	36.5"	Left	24"
TSS-2424-R24	24"	24"	14"	50.5"	29.5"	36.5"	Right	24"
TSS-2424-RL24	24"	24"	14"	72"	29.5"	36.5"	Left and Right	24"

*Below drainboard

18" DOUBLE SINKS (TDS)



TDS-1818-L18



TDS-1818-0



TDS-1818-RL18

STANDARD FEATURES

- Made with 18 gauge, 304 stainless steel
- Well-polished welded seams
- Die-stamped creased drainboards for positive drainage
- Curved corners and rolled edges
- 6.5" backsplash with 45° return
- Stainless steel legs, braces and bulletfeet
- Wall bracket, drain, strainer and overflow included
- Faucet holes 8" center

OPTIONAL ACCESSORIES (SEE PAGE 33)

- Casters

DOUBLE SINKS

Model	Bowl Size			Overall Size		
	L	W	H	L	W	H
TDS-1818-0	18"	18"	11"	41"	23.5"	36.5"
TDS-1821-0	18"	21"	14"	54"	26.5"	36.5"

DOUBLE SINKS WITH DRAINBOARD

Model	Bowl Size			Overall Size			Drainboard	
	L	W	H	L	W	H*	Side	Size
TDS-1818-L18	18"	18"	11"	56.5"	23.5"	36.5"	Left	18"
TDS-1818-R18	18"	18"	11"	56.5"	23.5"	36.5"	Right	18"
TDS-1818-RL18	18"	18"	11"	72"	23.5"	36.5"	Left and Right	18"

*Below drainboard

24" DOUBLE SINKS (TDS)



TDS-2424-L24



TDS-2424-0



TDS-2424-RL24

STANDARD FEATURES

- Made with 18 gauge, 304 stainless steel
- Well-polished welded seams
- Die-stamped creased drainboards for positive drainage
- Curved corners and rolled edges
- 6.5" backsplash with 45° return
- Stainless steel legs, braces and bulletfeet
- Wall bracket, drain, strainer and overflow included
- Faucet holes 8" center

OPTIONAL ACCESSORIES (SEE PAGE 33)

- TDW-basket
- Casters

DOUBLE SINKS

Model	Bowl Size			Overall Size		
	L	W	H	L	W	H
TDS-2424-0	24"	24"	14"	53"	29.5"	36.5"

DOUBLE SINKS WITH DRAINBOARD

Model	Bowl Size			Overall Size			Drainboard	
	L	W	H	L	W	H*	Side	Size
TDS-2424-L24	24"	24"	14"	74.5"	29.5"	36.5"	Left	24"
TDS-2424-R24	24"	24"	14"	74.5"	29.5"	36.5"	Right	24"
TDS-2424-RL24	24"	24"	14"	96"	29.5"	36.5"	Left and Right	24"

*Below drainboard

18" TRIPLE SINKS (TTS)



TTS-1818-0



TTS-1818-RL18

STANDARD FEATURES

- Made with 18 gauge, 304 stainless steel
- Well-polished welded seams
- Die-stamped creased drainboards for positive drainage
- Curved corners and rolled edges
- 6.5" backsplash with 45° return
- Stainless steel legs, braces and bulletfeet
- Wall bracket, drain, strainer and overflow included
- Faucet holes 8" center

OPTIONAL ACCESSORIES (SEE PAGE 33)

- Casters

TRIPLE SINKS

Model	Bowl Size			Overall Size		
	L	W	H	L	W	H
TTS-1818-0	18"	18"	11"	59"	23.5"	36.5"
TTS-1821-0	21"	18"	14"	59"	26.5"	36.5"

TRIPLE SINKS WITH DRAINBOARD

Model	Bowl Size			Overall Size			Drainboard	
	L	W	H	L	W	H*	Side	Size
TTS-1818-L18	18"	18"	11"	74.5"	23.5"	36.5"	Left	18"
TTS-1818-R18	18"	18"	11"	74.5"	23.5"	36.5"	Right	18"
TTS-1818-RL18	18"	18"	11"	90"	23.5"	36.5"	Left and Right	18"

*Below drainboard

24" TRIPLE SINKS (TTS)



TTS-2424-R24



TTS-2424-RL24

STANDARD FEATURES

- Made with 18 gauge, 304 stainless steel
- Well-polished welded seams
- Die-stamped creased drainboards for positive drainage
- Curved corners and rolled edges
- 6.5" backsplash with 45° return
- Stainless steel legs, braces and bulletfeet
- Wall bracket, drain, strainer, and overflow included
- Two sets of faucet holes 8" center

OPTIONAL ACCESSORIES (SEE PAGE 33)

- TDW-basket
- Casters

TRIPLE SINKS

Model	Bowl Size			Overall Size		
	L	W	H	L	W	H
TTS-2424-0	24"	24"	14"	77"	29.5"	36.5"

TRIPLE SINKS WITH DRAINBOARD

Model	Bowl Size			Overall Size			Drainboard	
	L	W	H	L	W	H*	Side	Size
TTS-2424-L24	24"	24"	14"	98.5"	29.5"	36.5"	Left	24"
TTS-2424-R24	24"	24"	14"	98.5"	29.5"	36.5"	Right	24"
TTS-2424-RL24	24"	24"	14"	120"	29.5"	36.5"	Left and Right	24"

*Below drainboard

SOILED DISH TABLES (TSDT)



Sink size: 20" x 20" x 6"

CLEAN DISH TABLES (TCDT)



STANDARD FEATURES

- **L: goes to the left of the dishwasher**
- **R: goes to the right of the dishwasher**
- Stainless steel legs with adjustable feet
- 3.5" drain included
- Available for deck or wall mount faucet
- TSDT-basket

FOR DECK MOUNT FAUCET

Model	L	W	H*
TSDT-3030-L	30"	30"	36.5"
TSDT-3030-R	30"	30"	36.5"
TSDT-3036-L	36"	30"	36.5"
TSDT-3036-R	36"	30"	36.5"
TSDT-3048-L	48"	30"	36.5"
TSDT-3048-R	48"	30"	36.5"
TSDT-3060-L	60"	30"	36.5"
TSDT-3060-R	60"	30"	36.5"
TSDT-3072-L	72"	30"	36.5"
TSDT-3072-R	72"	30"	36.5"

*Height excludes 6.5" backsplash

FOR WALL MOUNT FAUCET

Model	L	W	H*
TSDT-3030-LWM	30"	30"	36.5"
TSDT-3030-RWM	30"	30"	36.5"
TSDT-3036-LWM	36"	30"	36.5"
TSDT-3036-RWM	36"	30"	36.5"
TSDT-3048-LWM	48"	30"	36.5"
TSDT-3048-RWM	48"	30"	36.5"
TSDT-3060-LWM	60"	30"	36.5"
TSDT-3060-RWM	60"	30"	36.5"
TSDT-3072-LWM	72"	30"	36.5"
TSDT-3072-RWM	72"	30"	36.5"

*Height excludes 6.5" backsplash

STANDARD FEATURES

- Made with 16 gauge, 304 stainless steel
- Stainless steel legs with adjustable feet
- Welded reinforcement bar

Model	L	W	H*	Max Load
TCDT-3024-L	24"	30"	36.5"	230 lbs
TCDT-3024-R	24"	30"	36.5"	230 lbs
TCDT-3030-L	30"	30"	36.5"	240 lbs
TCDT-3030-R	30"	30"	36.5"	240 lbs
TCDT-3036-L	36"	30"	36.5"	245 lbs
TCDT-3036-R	36"	30"	36.5"	245 lbs
TCDT-3048-L	48"	30"	36.5"	250 lbs
TCDT-3048-R	48"	30"	36.5"	250 lbs
TCDT-3060-L	60"	30"	36.5"	260 lbs
TCDT-3060-R	60"	30"	36.5"	260 lbs
TCDT-3072-L	72"	30"	36.5"	275 lbs
TCDT-3072-R	72"	30"	36.5"	275 lbs

*Height excludes 6.5" backsplash

SOILED DISH BASKETS



TDW-BASKET



TSDT-BASKET

STANDARD FEATURES

- 20 gauge, 304 stainless steel
- Perforated for better drainage
- Two sturdy handles for easy maneuvering

Model	L	W	H
TSDT-BASKET	20"	20"	4"
TDW-BASKET*	23.75"	23.75"	4"

*For 24" x 24" dishwasher sink

24" SINGLE SINKS FOR DISHWASHERS (TSS)



TSS-2424-RDW

24" DOUBLE SINKS FOR DISHWASHERS (TDS)



TDS-2424-LDW

STANDARD FEATURES

- **L: left drainboard**
- **R: right drainboard**
- Made with 18 gauge, 304 stainless steel
- Well-polished welded seams
- Die-stamped creased drainboards for positive drainage
- Curved corners and rolled edges
- 6.5" backsplash with 45° return
- Stainless steel legs, braces and bulletfeet
- Centre drain included
- Optional: TDW-basket

SINGLE SINKS FOR DISHWASHERS

Model	Bowl Size			Overall Size			Drainboard	
	L	W	H	L	W	H*	Side	Size
TSS-2424-LDW	24"	24"	14"	50.75"	30"	36.5"	Left	24"
TSS-2424-RDW	24"	24"	14"	50.75"	30"	36.5"	Right	24"

*Below drainboard

DOUBLE SINKS FOR DISHWASHERS

Model	Bowl Size			Overall Size			Drainboard	
	L	W	H	L	W	H*	Side	Size
TDS-2424-LDW	24"	24"	14"	74.5"	30"	36.5"	Left	24"
TDS-2424-RDW	24"	24"	14"	74.5"	30"	36.5"	Right	24"

*Below drainboard

STAINLESS STEEL DISH WALL RACK (TWDR)



STANDARD FEATURES

- Made with 16 gauge, 430 stainless steel
- Drain on left or right
- Dish rack NOT included

Model	L	W	H	Drain	Baskets
TWDR-2221-R	21"	22"	28.5"	Right	1
TWDR-2221-L	21"	22"	28.5"	Left	1
TWDR-2242-R	42"	22"	28.5"	Right	2
TWDR-2242-L	42"	22"	28.5"	Left	2
TWDR-2263-R	63"	22"	28.5"	Right	3
TWDR-2263-L	63"	22"	28.5"	Left	3

HANDSINKS



THS-1



THS-SG



THS-AF



TPS-1617

HANDSINK STANDARD FEATURES

- Made with 18 gauge, 304 stainless steel
- Well-polished welded seams
- Curved corners and rolled edges
- 6.5" backsplash with 45° return
- Wall bracket and drain included

PEDESTAL STANDARD FEATURES

- Made with 18 gauge, 304 stainless steel
- Well-polished welded seams
- Curved corners and rolled edges
- 8" backsplash with 45° return
- 2 pedals, 1.5" drain and gooseneck faucet included

Model	Description	Bowl Size			Overall Size		
		L	W	H	L	W	H
THS-1	Hand sink with 2 holes, 4" centered (faucet included)	14"	10"	5"	17"	15"	13"
THS-1-0	Hand sink with 2 holes, 4" centered (faucet not included)	14"	10"	5"	17"	15"	13"
THS-AF	Hand sink for automatic faucet (faucet not included)	14"	10"	5"	17"	15"	13"
THS-SG	Hand sink with splash guards (faucet included)	14"	10"	5"	17"	15"	13"
TPS-1617	Pedestal hand sink with 2 pedals (faucet included)	14"	10"	5"	17.25"	15.25"	34"

WHY THORINOX HANDSINKS?

Thorinox offers many handwashing station options for numerous applications from foodservice and grocery stores, to cafeterias, waiting rooms, schools and much more. Our hand sinks are known for their reliability and convenience, as well as their practical design.

Not only do these sinks help you keep your hands clean throughout the day, they themselves are also easy to clean and sanitize, keeping your work space safe. With a multitude of types and models to choose to from, we are confident in finding the perfect handwashing station for your needs.

Whether you are looking for a hands-free option or a standard gooseneck faucet, Thorinox has you covered!

SINK BOWLS (TSB)**



**SPECIAL ORDER ITEM – CONTACT A REPRESENTATIVE

STANDARD FEATURES

- Made with 16 gauge, 304 stainless steel
- 3.5" centre drain
- Ideal for welding into stainless steel counters
- Optional: available in 14 gauge, 304 stainless steel

Model	L	W	H
TSB-1016-10	16"	10"	10"
TSB-1016-14	16"	10"	14"
TSB-1616-10	16"	16"	10"
TSB-1818-12	18"	18"	12"
TSB-1818-14	18"	18"	14"
TSB-2020-10	20"	20"	10"
TSB-2020-14	20"	20"	14"
TSB-2424-12	24"	24"	12"
TSB-2424-14	24"	24"	14"

DROP-IN SINKS (TDIS)**



**SPECIAL ORDER ITEM – CONTACT A REPRESENTATIVE

STANDARD FEATURES

- Bowl: 18 gauge, 304 stainless steel
- Top: 16 gauge, 304 stainless steel
- 3.5" centre drain

Model	Bowl Size			Overall Size		
	L	W	H	L	W	H
TDIS-0909-5	9"	9"	5"	12"	14"	5"
TDIS-1011-6	10"	11"	6"	13"	16"	5"
TDIS-1110-6	11"	10"	6"	14"	15"	6"
TDIS-1014-5	10"	14"	5"	13"	19"	5"
TDIS-1410-5	14"	10"	5"	17"	15"	5"

MOP SINKS (TMS)



STANDARD FEATURES

- Made with 16 gauge, 304 stainless steel bowl
- Designed for 3" drain pipe
- Floor mounted

Model	Bowl Size			Overall Size		
	L	W	H	L	W	H
TMS-2126-10	20"	16"	6"	25"	21"	10"
TMS-2533-10	28"	20"	6"	33"	25"	10"
TMS-2126-16	20"	16"	12"	25"	21"	16"
TMS-2533-16	28"	20"	12"	33"	25"	16"

LEAD-FREE FAUCETS



DM-100-68



DM-200-S12



WM-100-55



WM-200-S8 | WM-200-S12

STANDARD FEATURES

- 20" brass riser pipe
- 55" or 68" flexible stainless steel hose, Santoprene inner pipe
- 6" wall bracket
- Includes check valve to prevent cross-flow
- Spray valve conforms to ANSI/ASTM F2324-03
- CSA and NSF approved
- Plumbing installation kit included
- 3-year parts warranty
- Optional low flow rate spray gun of 0.65/gpm

LEAD-FREE FAUCETS



WM-04-S6



WM-08-S8



WM-08-S12



WM-08-G6

STANDARD FEATURES

- 4" centre wall mount faucet
- 6" swing nozzle

STANDARD FEATURES

- 8" centre wall mount faucet
- 8" length swing nozzle

STANDARD FEATURES

- 8" centre wall mount faucet
- 12" length swing nozzle

STANDARD FEATURES

- 6" gooseneck faucet
- 8" centre wall mount faucet



WM-08-AF



WM-08-MP



DM-04-S6



DM-08-S8 | DM-08-S12

STANDARD FEATURES

- Gooseneck faucet
- Battery operated magic eye
- For THS-AF sink
- Mixing valve included

STANDARD FEATURES

- 8" centre wall mount faucet
- For mop sink

STANDARD FEATURES

- 4" centre deck mount faucet
- 6" swing nozzle

STANDARD FEATURES

- 8" centre deck mount faucet
- 8" or 12" swing nozzle

PLUMBING PARTS



98-EN



006S | 008S | 012S



98-A-0



98-H-44 | 98-H-55 |
98-H-68



98-HD



98-PP



98-R



98-SVH



98-SV



98-V- C
98-V-H



98-WB




P0133

Model	Description
98-H-44	44" stainless steel hose
98-H-68	68" stainless steel hose
98-H-55	55" stainless steel hose
006S	6" spout
008S	8" spout
012S	12" spout
P-0133	Gooseneck faucet
98-A-V	Connection valve – female thread
98-A0	Connection valve – male thread
98-HD	Lever handle repair kit
98-V	Cartridge set (hot & cold)
9814-M	Wall mount pantry faucet 8" centre – male inlets
9814-F	Wall mount pantry faucet 8" centre – female inlets
98-WB	Wall bracket for faucet
98-PP	Riser pipe
SSDV	Pedestal sink faucet

Model	Description
98-HTF	Spray valve repair kit
98-SW	Low flow rate spray valve (0.65 gpm)
98-SVH	Black handle for spray valve
98-V-C	Cartridge – cold
98-V-H	Cartridge – hot
98-SP	Coil spring
98-R	Ring for spray valve
98-EN	Elbow and nipple
98-ASWV	Swivel connector
98-SV	Spray valve
9803	Deck mount 8" centre pantry faucet - female inlets
ZZ-00	Connection fitting
FV-001	Valve for WM-08-AF
GR100	Mixing valve for WM-08-AF
HS420	Hose for WM-08-AF

ACCESSORIES

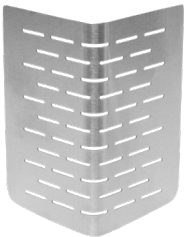
SINKS



TSS-18-BRACE | 20 | 24
TDS-18-BRACE | 20 | 24
TTS-18-BRACE | 20 | 24



T-SINK-LEG18-SS | 20 | 24



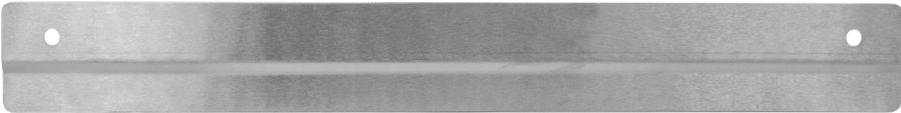
T-STRAINER



OVERFLOW



DRAIN-15



TWM-SINK



TLD



DRAIN-15



DRAIN-3.5

Model	Description
TSINK-LEG18-SS	Set of 4 stainless steel legs for 18" sink
TSINK-LEG20-SS	Set of 4 stainless steel legs for 20" sink
TSINK-LEG24-SS	Set of 4 stainless steel legs for 24" sink
TSS-18-BRACE	Set of "U" shaped reinforcement bars for 18" single sinks
TSS-20-BRACE	Set of "U" shaped reinforcement bars for 20" single sinks
TSS-24-BRACE	Set of "U" shaped reinforcement bars for 24" single sinks
TDS-18-BRACE	Set of "U" shaped reinforcement bars for 18" double sinks
TDS-24-BRACE	Set of "U" shaped reinforcement bars for 24" double sinks
TTS-18-BRACE	Set of "U" shaped reinforcement bars for 18" triple sinks
TTS-24-BRACE	Set of "U" shaped reinforcement bars fpr 24" triple sinks
T-STRAINER	Strainer
TWM-SINK18	Sink wall bracket for 18" sinks
TWM-SINK20	Sink wall bracket for 20" sinks

Model	Description
TWM-SINK24	Sink wall bracket for 24" sinks
BP-1.5	Brass pipe for 1.5" drain
DRAIN-15	1.5" diameter stainless steel drain
DRAIN-3.5	Drain for soiled dish table
OVERFLOW-08	8" stainless steel overflow
OVERFLOW-09	9" stainless steel overflow
OVERFLOW-10	10" stainless steel overflow
OVERFLOW-11	11" stainless steel overflow
OVERFLOW-12	12" stainless steel overflow
BRACE-I-CONNECTION	"I" shaped brace connector
BRACE-L-CONNECTION	"L" shaped brace connector
BRACE-T-CONNECTION	"T" shaped brace connector
TLD	Lever drain for TSS-2424-C / TSS-2430-C

ACCESSORIES

WORK TABLES



T-BULLETFEET-SS



T-BULLETFEET-GS



DSST-LEGS



DSST-CASTERS

Model	Description
DSST-2436-BGS	Set of 4 galvanized steel braces for DSST-2436-GS
DSST-2448-BGS	Set of 4 galvanized steel braces for DSST-2448-GS
DSST-2460-BGS	Set of 4 galvanized steel braces for DSST-2460-GS
DSST-2472-BGS	Set of 4 galvanized steel braces for DSST-2472-GS
DSST-2484-BGS	Set of 4 galvanized steel braces for DSST-2484-GS
DSST-2496-BGS	Set of 4 galvanized steel braces for DSST-2496-GS
DSST-3036-BGS	Set of 4 galvanized steel braces for DSST-3036-GS
DSST-3048-BGS	Set of 4 galvanized steel braces for DSST-3048-GS
DSST-3060-BGS	Set of 4 galvanized steel braces for DSST-3060-GS
DSST-3072-BGS	Set of 4 galvanized steel braces for DSST-3072-GS
DSST-3084-BGS	Set of 4 galvanized steel braces for DSST-3084-GS
DSST-3096-BGS	Set of 4 galvanized steel braces for DSST-3096-GS
DSST-2436-BSS	Set of 4 galvanized steel braces for DSST-2436-SS
DSST-2448-BSS	Set of 4 galvanized steel braces for DSST-2448-SS
DSST-2460-BSS	Set of 4 galvanized steel braces for DSST-2460-SS
DSST-2472-BSS	Set of 4 galvanized steel braces for DSST-2472-SS
DSST-2484-BSS	Set of 4 galvanized steel braces for DSST-2484-SS
DSST-2496-BSS	Set of 4 galvanized steel braces for DSST-2496-SS

Model	Description
DSST-3036-BSS	Set of 4 galvanized steel braces for DSST-3036-SS
DSST-3048-BSS	Set of 4 galvanized steel braces for DSST-3048-SS
DSST-3060-BSS	Set of 4 galvanized steel braces for DSST-3060-SS
DSST-3072-BSS	Set of 4 galvanized steel braces for DSST-3072-SS
DSST-3084-BSS	Set of 4 galvanized steel braces for DSST-3084-SS
DSST-3096-BSS	Set of 4 galvanized steel braces for DSST-3096-SS
DSST-CASTERS	Casters for DSST, DSTAND and Sinks (no brake)
DSST-CASTER-B	Casters for DSST worktables (with brake)
DSST-LEGS-GS	Set of four 32" galvanized steel legs
DSST-LEGS-SS	Set of four 32" stainless steel legs
DSST-LEGS36-GS	Set of 4 galvanized steel legs for 36" high table
DSST-LEGS36-SS	Set of 4 stainless steel legs for 36" high table
DSTAND-LEGS	Set of 4 stainless steel equipment stand legs
T-BULLETFEET-GS	Bulletfeet for galvanized steel tables
T-BULLETFEET-SS	Bulletfeet for stainless steel tables



DRACK-BAR-15



DRACK-BUMPER



DRACK-CASTERS



DRACK-COVER

Model	Description
DRACK-CASTERS	Casters for DRACK bun pan racks (no brake)
DRACK-CASTERS-B	Casters for DRACK bun pan racks (with brake)
DRACK-BUMPER	Bumper for ALU DRACK
DRACK-COVER	Protective cover for full size DRACK
BOLT-KIT	Set of 12 screws

Model	Description
LONG HEX BOLT	Hex bolt for DRACK
DRACK-BAR-15	Set of 6 bars (16.25" inside)
DRACK-BAR-18	Set of 6 bars (18.25" inside)
DRACK-BAR-20	Set of 6 bars (20.25" inside)

ACCESSORIES

FRYERS



STANDARD FEATURES

- Fryer baskets
- Wire thickness: 1.2mm (body), 4.8mm (handle)



STANDARD FEATURES

- Fryer splash guard
- 18 gauge, 430 calibre stainless steel



STANDARD FEATURES

- Fryer joining bar
- 18 gauge, 430 calibre stainless steel



STANDARD FEATURES

- French fry dump station
- Adjustable (front to back) for all fryer brands
- 22 gauge, 304 calibre stainless steel



STANDARD FEATURES

- Knockdown standing French fry dump station
- 18 gauge, 430 calibre stainless steel

Model	L	W	H
TFRYB-3315-SS	13"	6"	6"
TFRYB-3317-SS	13"	6.7"	6"
TFRYB-3322-SS	13"	8.7"	6"
TFRYB-3330-SS	13"	11.8"	6"
TFRYB-3317-HD*	13"	11.8"	6"
TFRYB-3330-HD*	14"	12"	6"

*Heavy duty

Model	L	W	Opening
TSGR-2214-SS Royal Fryers	22"	14"	0.75"
TSGU-2214-SS Universal	22"	14"	1"

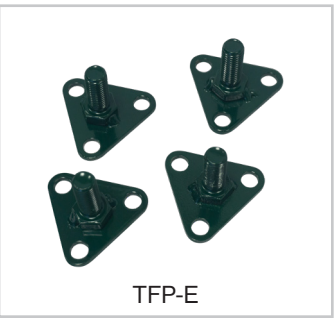
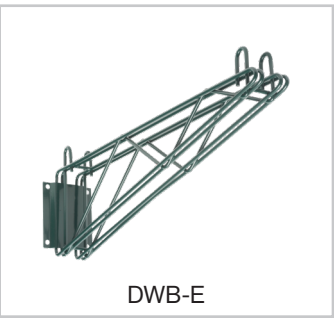
Model	L	W
TFJB-22-SS	22"	1.5"

Model	L	W	H
FFDS-1218-SS	13"	6"	6"

Model	L	W	Interior Width	H
TSDS-2417-SS	24"	17"	15.5"	36"
TSDS-2621-SS	26"	21"	18.25"	36"

ACCESSORIES

WIRESHELVES



Model	Description
P-CLIP	Set of 4 clips
TEUH-18	18" Epoxy up handle
TEUH-21	21" Epoxy up handle
TEUH-24	24" Epoxy up handle
TCUH-18	18" Chrome up handle
TCUH-21	21" Chrome up handle
TCUH-24	24" Chrome up handle
TESR-18	18" Epoxy support rail
TESR-24	24" Epoxy support rail
TCSR-18	18" Chrome support rail
TCSR-24	24" Chrome support rail
TEFH-18	18" Epoxy flat handle
TEFH-21	21" Epoxy flat handle
TEFH-24	24" Epoxy flat handle
TCFH-18	18" Chrome flat handle
TCFH-21	21" Chrome flat handle
TCFH-24	24" Chrome flat handle
TCWL-18	18" Chrome wireshelf ledge
TCWL-24	24" Chrome wireshelf ledge
TCWL-36	36" Chrome wireshelf ledge
TCWL-48	48" Chrome wireshelf ledge
TEWL-18	18" Epoxy wireshelf ledge
TEWL-24	24" Epoxy wireshelf ledge
TEWL-36	36" Epoxy wireshelf ledge
TEWL-48	48" Epoxy wireshelf ledge
P-CLAMP-E	Epoxy finish clamp
P-CLAMP-C	Chrome finish S clamp

Model	Description
TPWB-CA	Chrome post wall bracket (Type A)
TPWB-CB	Chrome post wall bracket (Type B)
TPWB-EA	Epoxy post wall bracket (Type A)
TPWB-EB	Epoxy post wall bracket (Type B)
TWS-BUMPER	Bumper for epoxy or chrome wireshelves
TCSD-18	18" Chrome shelf divider
TCSD-21	21" Chrome shelf divider
TCSD-24	24" Chrome shelf divider
TESD-18	18" Epoxy shelf divider
TESD-21	21" Epoxy shelf divider
TESD-24	24" Epoxy shelf divider
SWB-14-E	14" Epoxy single wall bracket for TGES-14XX shelf
SWB-18-E	18" Epoxy single wall bracket for TGES-18XX shelf
SWB-21-E	21" Epoxy single wall bracket for TGES-21XX shelf
SWB-24-E	24" Epoxy single wall bracket for TGES-24XX shelf
DWB-14-E	14" Epoxy double wall bracket for TGES-14XX shelf
DWB-18-E	18" Epoxy double wall bracket for TGES-18XX shelf
DWB-21-E	21" Epoxy double wall bracket for TGES-21XX shelf
DWB-24-E	24" Epoxy double wall bracket for TGES-24XX shelf
SWB-14-C	14" Chrome single wall bracket for TCFS-14XX shelf
SWB-18-C	18" Chrome single wall bracket for TCFS-18XX shelf
SWB-21-C	21" Chrome single wall bracket for TCFS-21XX shelf
SWB-24-C	24" Chrome single wall bracket for TCFS-24XX shelf
DWB-14-C	14" Chrome double wall bracket for TCFS-14XX shelf
DWB-18-C	18" Chrome double wall bracket for TCFS-18XX shelf
DWB-21-C	21" Chrome double wall bracket for TCFS-21XX shelf
DWB-24-C	24" Chrome double wall bracket for TCFS-24XX shelf

Model	Description
TWPS-1836	Plastic screen for 18" x 36" shelf
TWPS-1848	Plastic screen for 18" x 48" shelf
TWPS-1860	Plastic screen for 18" x 60" shelf
TWPS-1872	Plastic screen for 18" x 72" shelf
TWPS-2436	Plastic screen for 24" x 36" shelf
TWPS-2448	Plastic screen for 24" x 48" shelf
TCWB-1836	Single U brace for TCFS-1836
TCWB-1848	Single U brace for TCFS-1848
TCWB-1860	Single U brace for TCFS-1860
TCWB-2436	Single U brace for TCFS-2436
TCWB-2448	Single U brace for TCFS-2448
TCWB-2460	Single U brace for TCFS-2460
TEWB-1836	Single U brace for TGES-1836
TEWB-1848	Single U brace for TGES-1848
TEWB-1860	Single U brace for TGES-1860
TEWB-2436	Single U brace for TGES-2436
TEWB-2448	Single U brace for TGES-2448
TEWB-2460	Single U brace for TGES-2460
TBF-C	Bulletfeet for Chrome post
TBF-E	Bulletfeet for Epoxy post
TPOST-CAP	Cap for wireshelf
TPTC-4	4" price tag channel
TFP-E	Epoxy foot plate
TFP-C	Chrome foot plate
SHELF-CASTERS	Castors for wireshelves (no brake)
SHELF-CASTERS-B	Castors for wireshelves (with brake)
S-HOOK-E	Epoxy finish S hook
S-HOOK-C	Chrome finish S hook

ACCESSORIES

RACKS



DRACK-BAR-15



DRACK-CASTERS-B



TKCA-CASTER-B

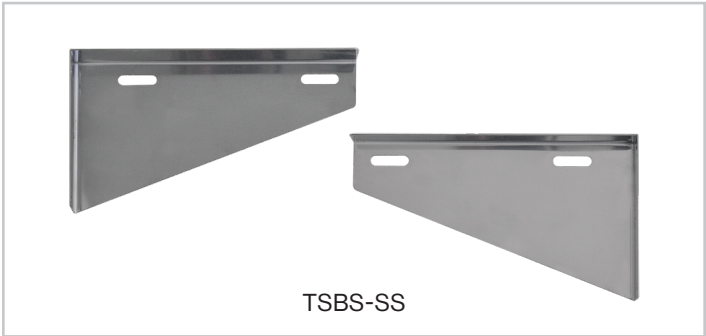


DRACK-COVER

Model	Description
DRACK-CASTERS	Castors for DRACK bun pan racks (no brake)
DRACK-CASTERS-B	Castors for DRACK bun pan racks (with brake)
DRACK-BUMPER	Bumper for ALU DRACK
DRACK-COVER	Protective cover for full size DRACK
BOLT-KIT	Set of 12 screws
LONG HEX BOLT	Hex bolt for DRACK
DRACK-BAR-15	Set of 6 bars

Model	Description
DRACK-BAR-18	Set of 6 bars
DRACK-BAR-20	Set of 6 bars
TCAD-CASTER	Castors for stainless steel TCAD cabinets (no brake)
TCAD-CASTER-B	Castors for stainless steel TCAD cabinets (with brake)
DRACK-BUMPER	Bumper for caster
TKCA-CASTER	Castors for TKCA (no brake)
TKCA-CASTER-B	Castors for TKCA (with brake)

WALL SHELF BRACKETS



TSBS-SS



TMBS-SS

Model	Description
TSBS-12-SS	Side bracket for 12" deep wall shelf
TSBS-14-SS	Side bracket for 14" deep wall shelf
TSBS-16-SS	Side bracket for 16" deep wall shelf

Model	Description
TMBS-1272-SS	Middle bracket for 12" deep wall shelf
TMBS-1472-SS	Middle bracket for 14" deep wall shelf
TMBS-1672-SS	Middle bracket for 16" deep wall shelf



THORINOX POLICIES

Warranty

Thorinox Inc. warrants that all Thorinox products will be free from defects in material and manufacturing at time of shipment.

Thorinox offers a one-year parts only warranty on its products, which covers against rust or corrosion or manufacturers' defect, when used under general indoor conditions. Green epoxy wireshelves have a lifetime* warranty. This warranty is made for the benefit of the original owner under normal usage and an original proof of purchase must be provided with any warranty claim.

Thorinox's liability is limited to the replacement of defective products or parts, following inspection by a Thorinox representative. Any returns must be prepaid freight to Thorinox and Thorinox will not be responsible for any and all ancillary expenses that may arise. This warranty is only applicable in Canada.

Pricing and Product Specifications

Prices are in US Dollars and are subject to change without notice. Prices may change due to unforeseen cost increases of imported products, raw materials or currency fluctuations. As we strive to provide high quality products, specifications are subject to change without prior notice. Some variations between pictures and products may occur.

Order Placement

All general orders must meet or exceed \$250.00 net minimum. A \$25.00 handling charge will automatically be added to any order if it does not meet the requirements set above. We require a written confirmation for all verbal orders. Please send them by fax or by email.

Returns

We will not accept returns unless approved in writing. Returned goods must be received within 60 days of purchase. To obtain a return authorization, please call 1.800.567.3620. All authorized returns must be FREIGHT PREPAID. A restocking fee of 25% will be applied to any unused products in their original packaging. Returned products which have been used, opened or are without their original box, are subject to inspection and a 50% restocking fee may be applicable.

Freight or Handling Damage

All items must be visually inspected for any damage, no matter how insignificant. If an item is received damaged, it must be clearly indicated "Received Damaged" on the carrier's waybill. Thorinox will not replace or credit any damaged equipment, if not confirmed and damage described in writing at the time of delivery. Thorinox does not prepay any third party shipments.

*The warranty will be voided if shelving is installed in a salty or humid environment.



DISTRIBUTED BY DISTEX M&M

www.thorinox.com
1-800-567-3620

