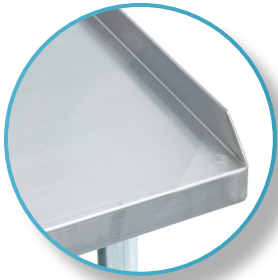








EQUIPMENT STAND


DSTAND-3018-GS



FEATURES

- 
Made with high quality 430 stainless steel
- 
Dimensions: 18" x 30" x 22"
- 
Easy to assemble
- 
Gauge 18
- 
Stronger and non-welded corners
- 
Galvanized undershelf and legs

OPTIONAL ACCESSORIES

- 
Set of swivel casters

